

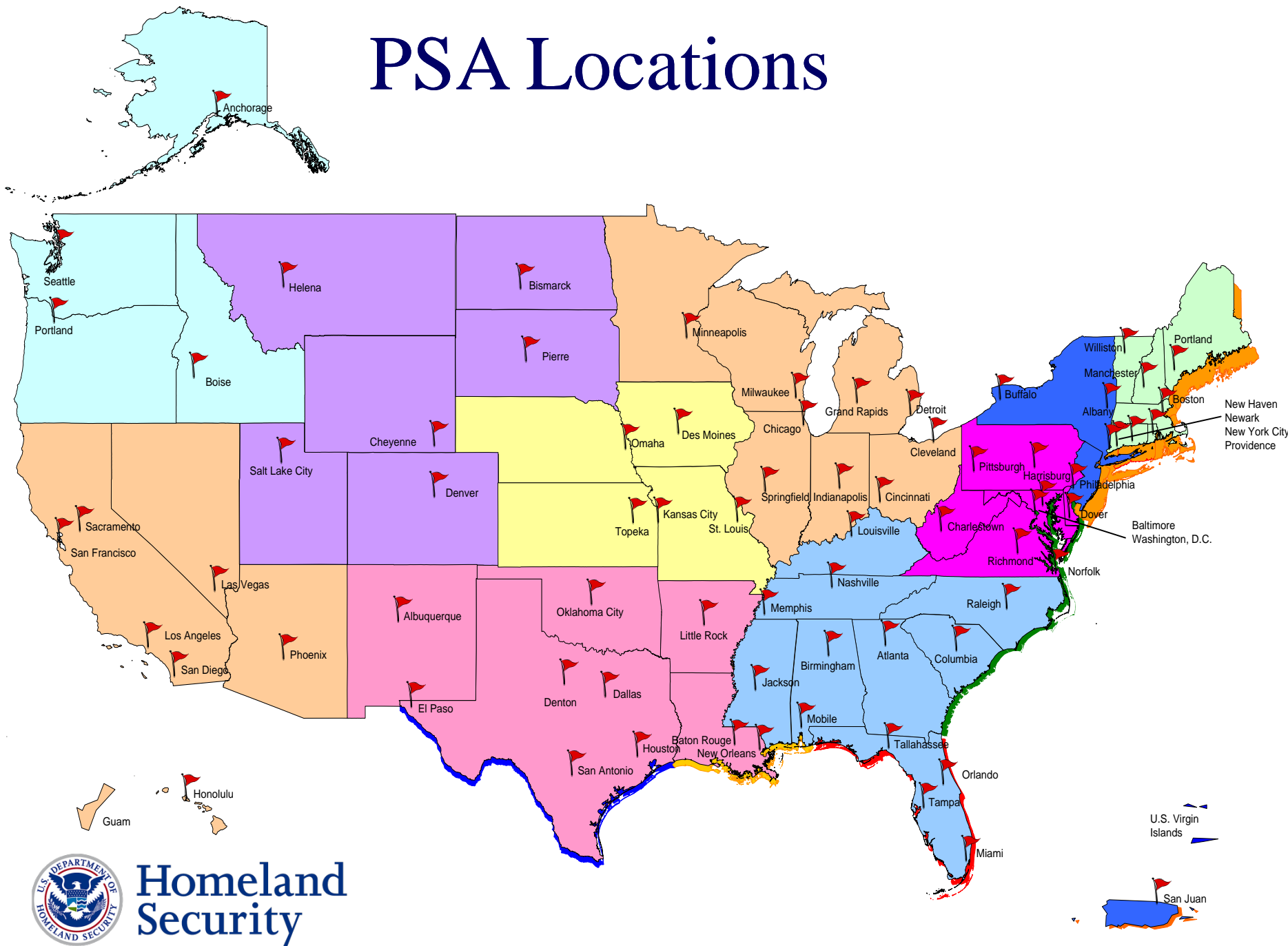
Protective Security Advisors (PSAs)

- Cadre of 92 PSAs and Supervisory PSAs serving local communities as critical infrastructure security specialists.
 - Average over 20 years of law enforcement, military, and anti-terrorism experience.
- Deployed to 70 Districts in 50 States and 1 Territory.
- Reside in the communities where they work.
- Fusion Center Pilot Project – deployed 1 Infrastructure Protection Analyst (IPA).
- State, local, tribal and territorial link to DHS infrastructure protection resources.
 - Coordinate vulnerability assessments, including Enhanced Critical Infrastructure Protection (ECIP)/Infrastructure Survey Tool (IST) assessments and training.
 - Provide support during incident management.
 - Provide vital link for information sharing.
 - Assist facility owners and operators with obtaining security clearances.



**Homeland
Security**

PSA Locations



Homeland
Security

PSA Primary Responsibilities



- Assist with ongoing State and local CIKR (Critical Infrastructure/Key Resources) security efforts coordinated by Homeland Security Advisors (HSAs).
- Support development of the national risk picture by identifying, assessing, monitoring, and minimizing risk to critical assets at the local and regional level.
- Assist with the implementation and execution of the National Infrastructure Protection Plan (NIPP).
- Upon request, facilitate and coordinate vulnerability assessments of local CIKR.
- Provide reach-back capability to DHS.



**Homeland
Security**

Incident Management Role

- Support response, recovery, and reconstitution efforts of States affected by a disaster.
 - Provide support in Joint Field Offices (JFOs).
 - Serve as pre-designated Infrastructure Liaison (IL) at the JFO when requested in accordance with the National Response Framework (NRF).
 - Help coordinate Federal, State, and local law enforcement CIKR protection efforts. Coordinate sharing of IP analysis within JFO.
 - Perform surveys and assessment visits to identify vulnerabilities.
 - Provide advice on protective measures to enhance security at CIKR in and around impact area.
 - Provide key stakeholders with updates on issues relating to CIKR assets.
 - Coordinate with State and local representatives to ensure re-entry of critical employees.



IL Roles & Responsibilities



Midwest Flooding 2008



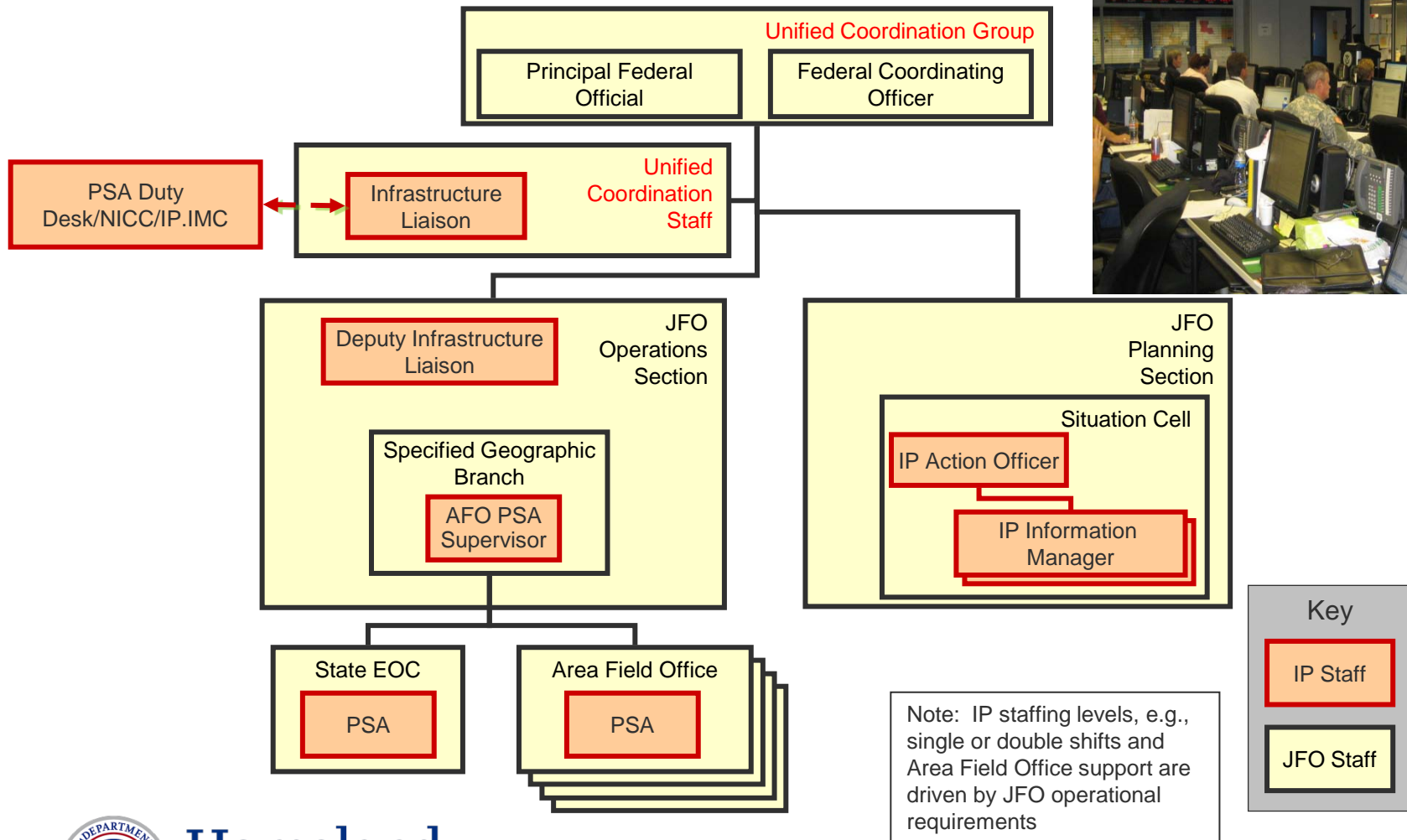
CA Wildfires 2007

- During contingency events, PSAs support the response, recovery, and reconstitution efforts of the State or States affected by the incident by serving as pre-designated Infrastructure Liaisons (ILs), Deputy ILs, and the IP forward deployed support staff.
 - Pre-designated for Pandemic Influenza
 - Pre-designated for Bio Terrorism
 - Pre-designated for Hurricane



**Homeland
Security**

Joint Field Office



Homeland
Security